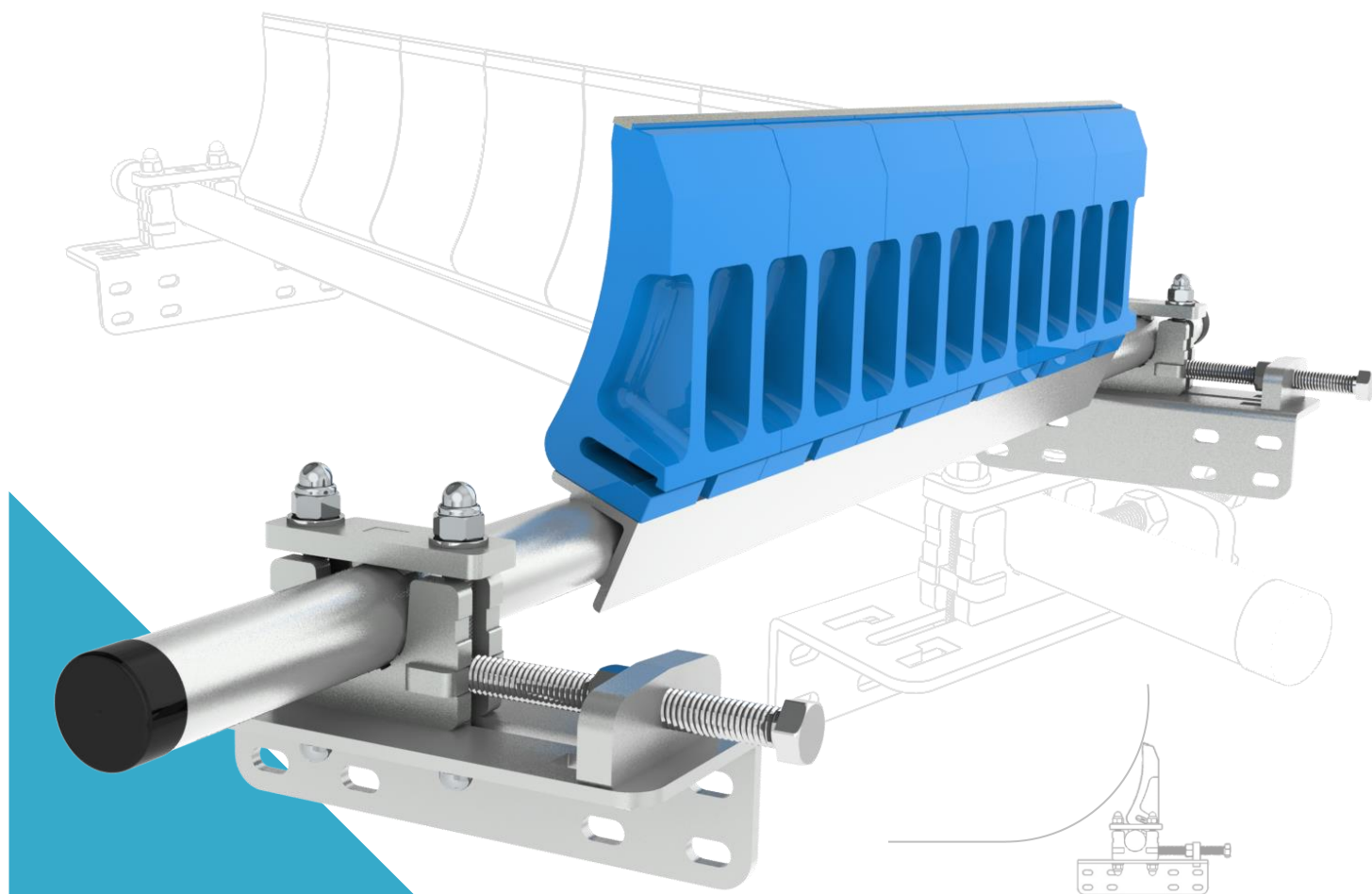




TECHNICGUM
POLYMERES

56, CHEMIN DE CASTEAU
B-7063 NEUFVILLES
T +32.65 73 10 93
F +32.65 73 10 94
Email : info@tgipoly.com

RacloFlex Z²



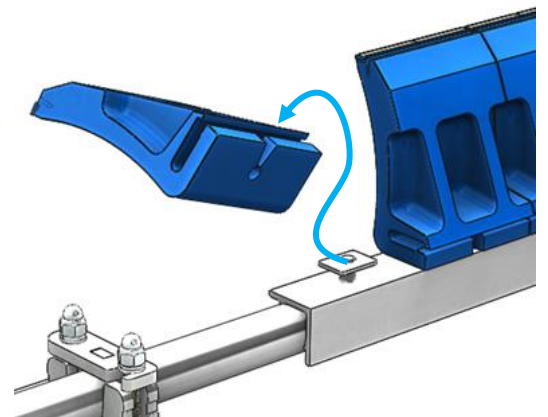
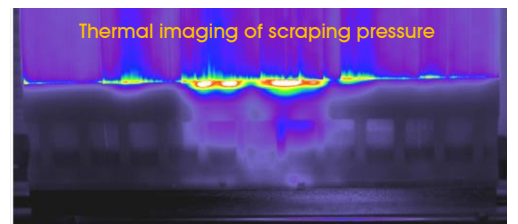
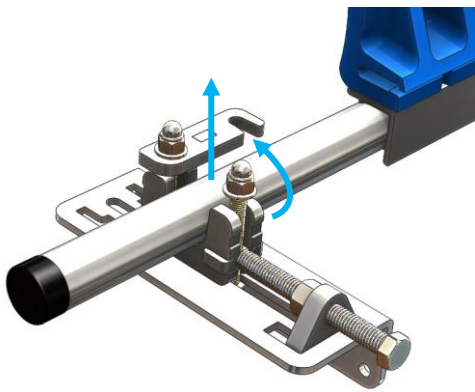
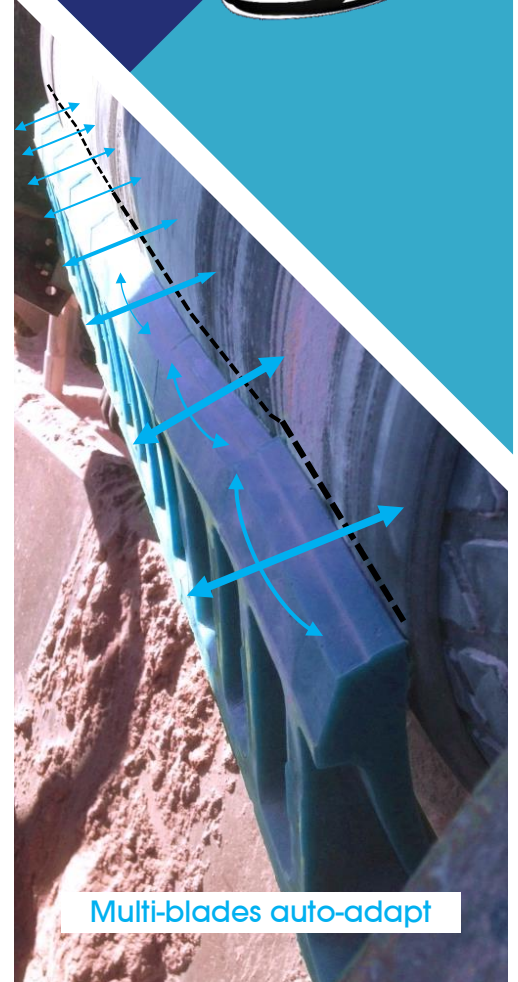
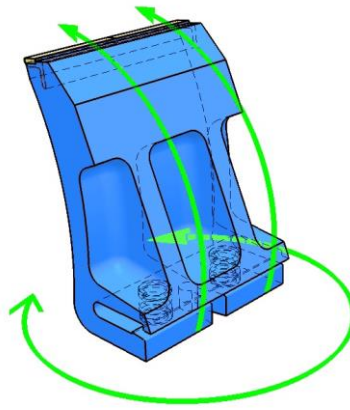
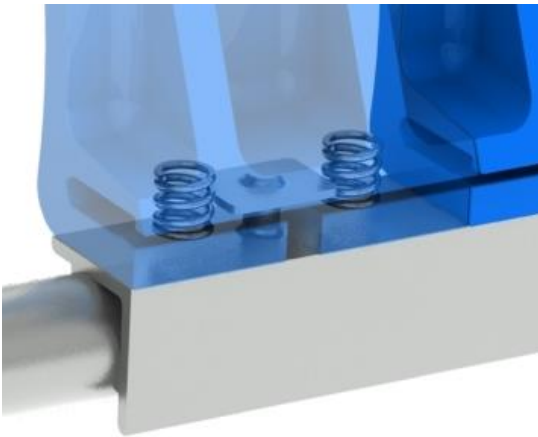
**Frontal multi-blade belt
scraper with spring
automatic
compensation**



Designed by TechnicGum in Belgium
Made & Assembled in European Union



Each anti-clogging profile blade is equipped with internal 2 springs and is quick connected on a pivot that allows slight rotation and easy change without adjustment

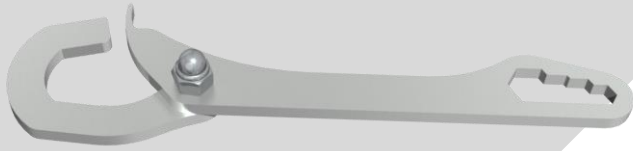


- Galvanized metal parts
- Retractable pressure rods
- Economic and polyvalent
- High performance cleaning
- Only replace the used blades
- Several types of blades available
- Toothed bearing with easy opening
- Spring tension system integrated in each blade
- Realignment of blades for central wear compensation

Options and accessories

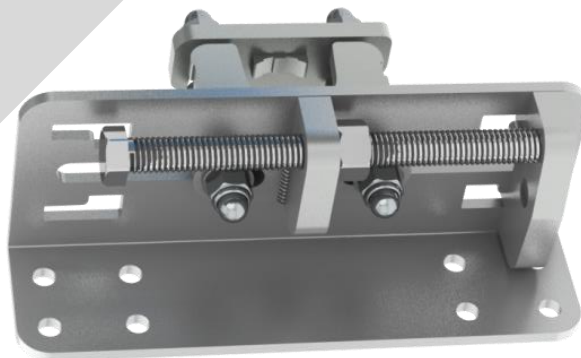
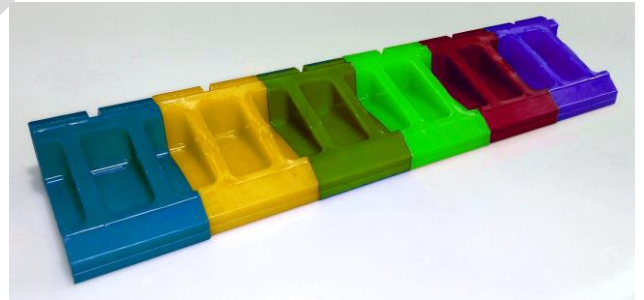
Special key « MultiTool »

Grouping every necessary functions for manipulation and setting of scraper



Special quality

Large variety of blade quality available for all type of application



Pulling pressure

Enables the pressurisation of the scraper from the top without going beyond the angle

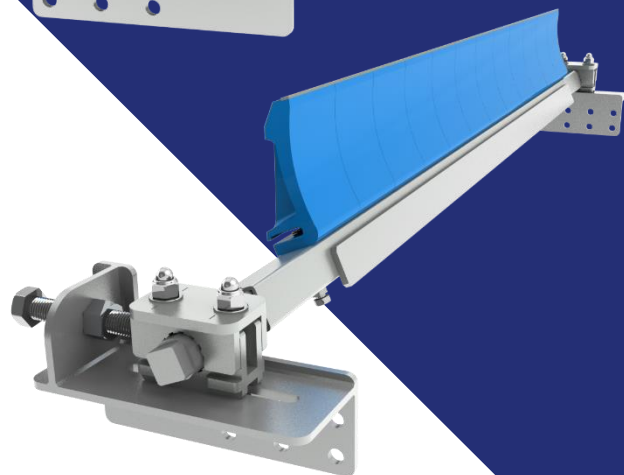
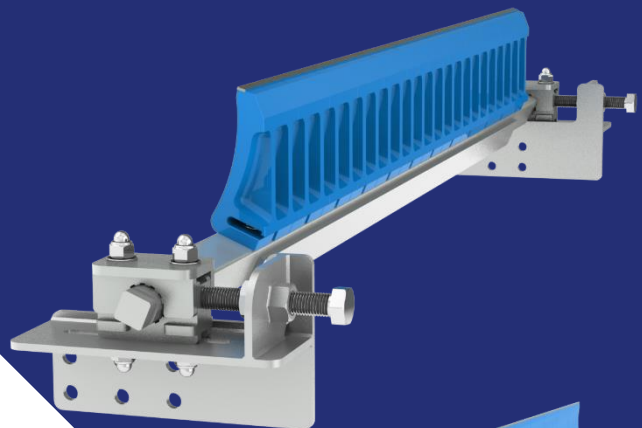
General information

	400	500	650	800	1001	1002	1200	1401	1402	1600	1801	1802	2001	2002
Scraping width mm	378	504	630	756	882	1008	1134	1260	1386	1512	1638	1764	1890	2016
Nb blades	3	4	5	6	7	8	9	10	11	12	13	14	15	16

- Quality of blade(s) : Tungsten carbide : 93 HRA 3x10mm
 Or- Tungsten carbide: 93 HRA 5x10mm
 Or- Impact carbide : 66 HRA 5x10mm
 Or- Ceramic : Sintered alumina Al₂O₃92% 10x15mm
 Or- Wear resistant polyurethane: 25mm³ svt DIN53516-10N
- Work position : Scraping angle = 90° at tangent (target from center - see note)
- Surface treatment : All electro-galvanized steel pieces + inox bolts A2
- Temperature : -15° / + 50° C
- pH slot : 3 to 11 maxi
- Maximum speed : Z² 1 direction = 2 m/s 2 directions = not recommended
 Z²-HD 1 direction = 4 m/s 2 directions = not recommended
- Do not expose to : Impact and staples on tungsten carbide and Ceramic (choose Polyurethane blades or impact carbide)
 Corrosive atmosphere : Inox all or part possible
 Paper, thread, cloth and household waste
 Uncontrolled clogging on entire scraper

RacloFlex Z²-HD

The heavy version RacloFlex Z²-HD is proposed for belts from 1400 to 2200; Tungsten carbide 5x10, Tube, axles and reinforced mechanic



To go further

Used jointly with scraper

RacloFlex Sw
Patented - Breveté

